

*A Must-Have California Native Plant!*

# Penstemon

*Penstemon heterophyllus*



**Description:** Foothill Penstemon bears attractive spires of flowers in shades of blue or purple to nearly magenta. It is water-conserving, evergreen and very attractive to bees and butterflies.



**Light:** Full Sun / Part Shade



**30** species of butterflies and moths can lay eggs on this plant.



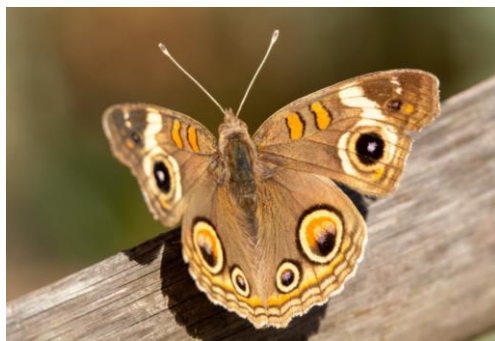
**Featured Butterfly:** The *Gray Buckeye* butterfly has large eyespots on its wings to trick predators into believing they are a larger animal. It likes to perch on bare ground or warm flat rocks, so include these in your garden to attract these and other butterflies.

**Keystone Plant:** This California native is a “must have” (host) plant for caterpillars, which, in turn, are the “must have” food for baby birds.

**Discover more at [BringingBacktheNatives.net](http://BringingBacktheNatives.net)**

**Images:** Foothill Penstemon © Jennifer Chandler; Gray Buckeye caterpillar © catchang; Gray Buckeye butterfly © jlcreativearts (all Creative Commons some rights reserved (CC-BY-NC) via iNaturalist.org)  
Design: Jennifer B. Dirking – EcoGardenista.org

Permission is given for these signs to be freely distributed, but they cannot be sold.



Calscape.org



Scan here  
for details

